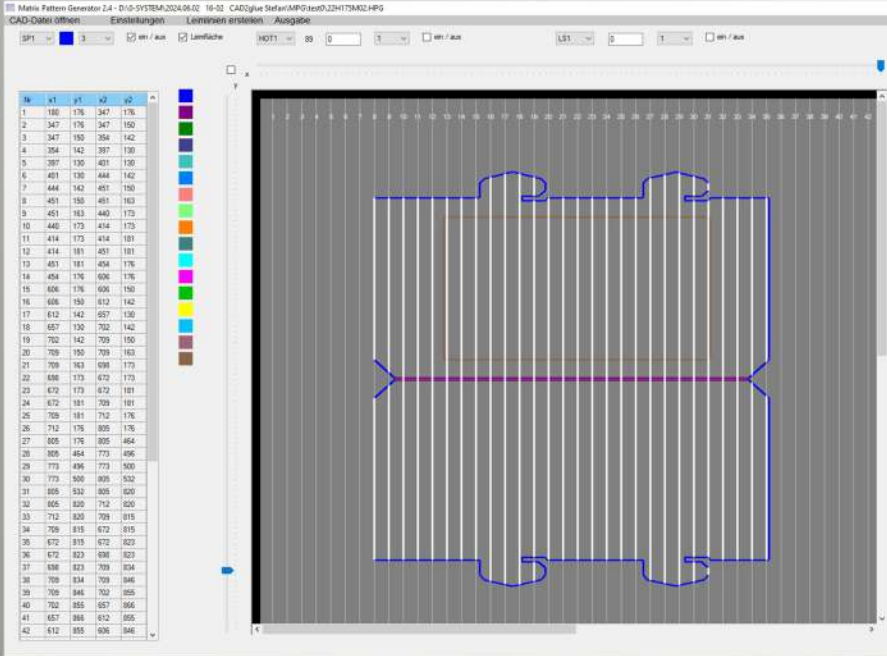




SYSTEM

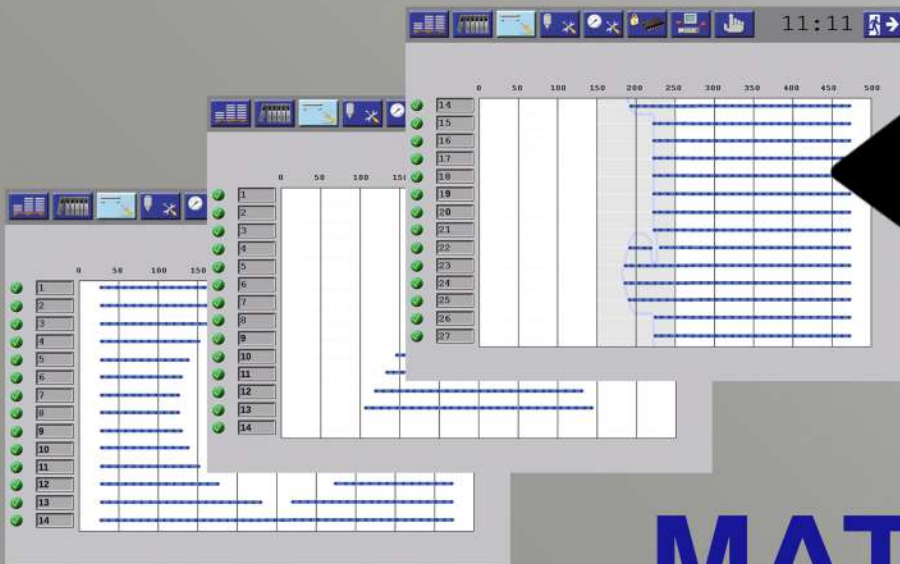
MATRIX

KAS[®]



CAD

to



MATRIX glue



www.TOPGUARD.tech

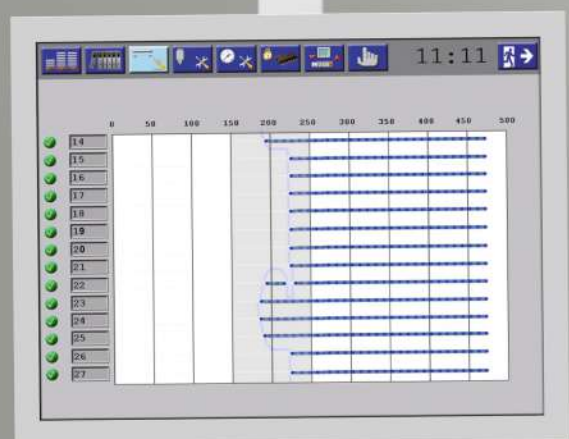
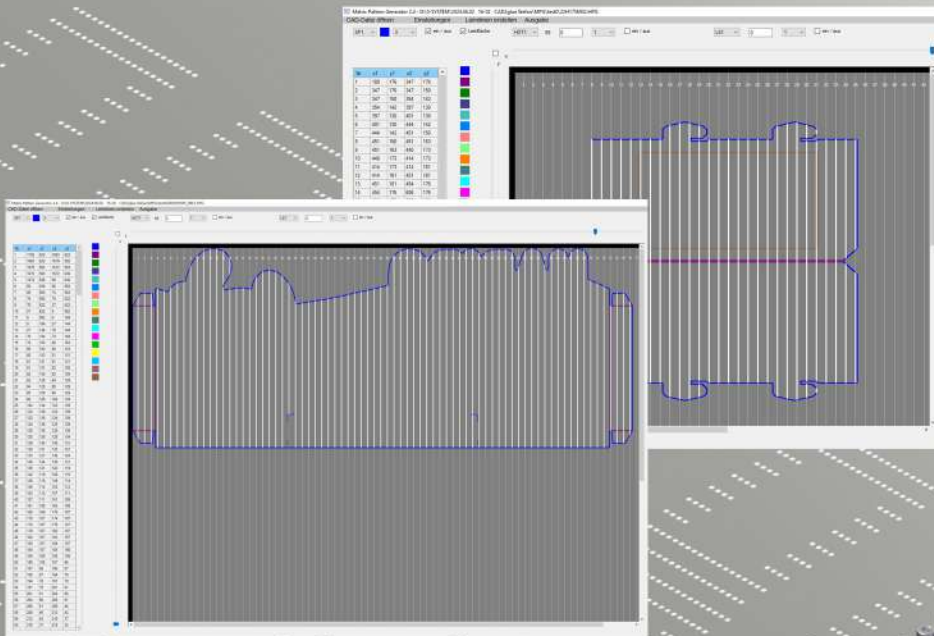
MATRIX system

Universal CAD programmable gluing system

CAD 2 Matrix glue

If you have to apply complex glue pattern to larger areas using multiple glue guns, the conventional programming of each individual line is very laborious and time-consuming. In this case, you long for a simple programming way that enables automatic programming of gluing based on CAD data.


KAS reflected this need by developing the Windows based software "Matrix-Pattern-Generator" MPG. The MPG software inputs CAD data and outputs ready generated gluing patterns. Building this bridge between CAD and glue application is an essential prerequisite for achieving the Industry 4.0 standard.




KAS[®]

KAS GmbH

An der Lehmkuhle 8
37359 KUELLSTEDT

Tel. +49 36075 589390 

Tel. +49 36075 589391 

Fax +49 36075 589392

email info@KAS-SYSTEMS.de

web www.KAS-SYSTEMS.de

CAD 2 MATRIX

Imports CAD data and outputs gluing patterns